



## Key Features

- Expands output port capabilities of the RTI XP-8 Control Processor.
- I/O ports are compatible with industry standard IR emitters, blasters, and repeater systems.
- All output ports incorporate both short-circuit and overload protection.
- Variable IR output on all ports.
- I/O ports support all optional RTI power sensing and communications modules.
- LED illuminates when ports are active.
- Control port for connection to RTI Control Processors.
- Adjustable device ID allows up to ten PCM-8 units in one system
- Sturdy steel construction.
- 12VDC power supply included.

## PCM-8 Port Control Module

With eight multi-purpose output ports and an adjustable device ID, the PCM-8 provides the flexibility and expandability to increase the output capabilities of the RTI XP-8 Control Processor to accommodate larger projects. Each port provides IR routing capabilities, one-way RS232 communication and power sensing (with RTI accessory devices). Control from the RTI processor is communicated using the expansion RS-485 port which allows the MPIO ports of the PCM-8 to become a seamless extension of the processors existing ports.

## Description

The PCM-8 allows the RTI control system to expand with the project. When all that is needed is additional ports for connection of infrared emitters or RS-232 cables, incorporating a PCM-8 is the answer. Used with RTI XP-8 Control Processors, the PCM-8 simply becomes an extension of the processor. This opens up the control options as well by providing support for IR routing and power sensing with RTI sensing modules. The PCM-8 can be enlisted to deliver solid reliable performance for large scale systems with an adjustable device ID allowing up to ten units to be used in a system to provide over 80 multi-purpose I/O ports.

Call 952-253-3100

[www.rticorp.com](http://www.rticorp.com)

## Specifications

Power Supply .....+12VDC, 1A

Multi-Purpose Output Ports .....Eight custom 3.5mm 4-conductor jacks  
.....Designed for RTI modules as well as industry-standard IR emitters

IR Output Drive..... 100mA maximum (per port, adjustable)

Infrared Frequency Transmission Range ..... 15kHz - 460kHz

Infrared Input ..... Compatible with industry-standard repeaters and receivers

Control Port ..... RS-485

Device IDs ..... Ten , Rotary switch

Enclosure..... Formed steel, black powder coating

Mounting.....Wall-mount or free standing

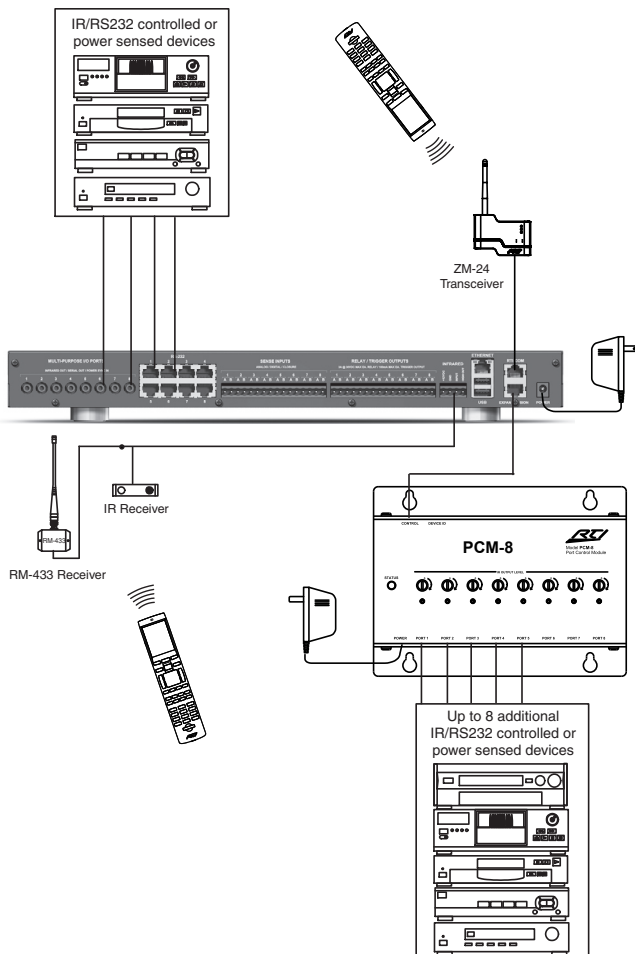
Dimensions (W x H x D) ..... 7.0in (179mm) x 5.25in (133mm) x 1.5in (38mm)

Weight ..... 1 lb. 9oz (726g)

Warranty .....One Year (Parts & Labor)

All specifications subject to change without notice

## Installation Diagram



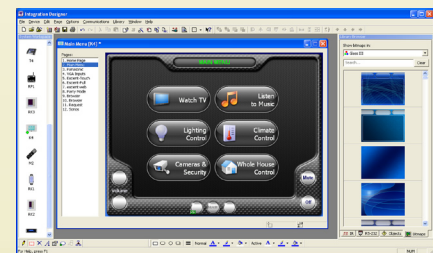
## Processors / Accessories

<b>XP-8</b>	<b>Advanced Control Processor</b>
<b>RCM-12</b>	<b>Relay Control Module</b>
<b>ECB-5</b>	<b>IR Emitter Connecting Block</b>
<b>CM-232</b>	<b>RS-232 Communication Module</b>
<b>VPS-1</b>	<b>Voltage Power Sensor</b>
<b>SPS-1</b>	<b>Video Sync Power Sensor</b>



## Other RTI Products

<b>T1-B</b>	<b>Universal System Controller</b>
<b>M2</b>	<b>Universal System Controller</b>
<b>T2-B</b>	<b>Universal System Controller</b>
<b>T2-Cs</b>	<b>Universal System Controller</b>
<b>T2-C</b>	<b>Universal System Controller</b>
<b>T3-V</b>	<b>Universal System Controller</b>
<b>T4</b>	<b>Universal System Controller</b>
<b>U1</b>	<b>Weather Resistant Controller</b>
<b>U2</b>	<b>Weather Resistant Controller</b>
<b>RKM-1</b>	<b>In-Wall Multi-Room Audio Keypad</b>
<b>RK1</b>	<b>In-Wall Keypad Controller</b>
<b>RK2</b>	<b>In-Wall Touchscreen Controller</b>
<b>RK3</b>	<b>In-Wall Touchscreen Controller</b>
<b>K4</b>	<b>In-Wall Touchscreen Controller</b>
<b>IR-PRO</b>	<b>Infrared Capture System</b>



Integration Designer® Programming Software

5775 12th Avenue East, Suite 180, Shakopee, MN 55379  
PH: (952) 253-3100 • Website: [www.rticorp.com](http://www.rticorp.com)

**RTI**  
It's Under Control®