



## Key Features

- Models available in either 433MHz RF or 2.4GHz RF (utilizing Zigbee® technology).
- Two-way feedback from controlled devices available on 2.4GHz (Zigbee®) model.
- Ergonomic design permits effortless, one-handed operation.
- Full VGA resolution (480x640) color TFT LCD to display custom buttons, text, graphics and animations.
- Integrated high-resolution touchscreen.
- Three-way rocker switch for scrolling list navigation.
- Integrated 802.11g wireless Ethernet.
- Tilt switch can automatically turn on the backlight when picked up.
- Extremely bright, backlit display and keypad.
- Transmits IR and RF (or both - on a single button press!).
- System includes a Lithium-Ion battery and docking station.
- Completely customizable and programmable.
- Extremely wide IR transmitting frequency range.
- Optional 'Voltage' and 'Video' sensing modules to monitor power status of equipment when used with RTI processors.
- Capable of RS-232 control when used with certain RTI processors.
- Non-volatile Flash memory stores your system configuration even when power is not present.
- Field upgradable firmware.
- USB Programming.

## T3-V Universal Controller

Representing the pinnacle of elegance, the T3-V is the second generation of the award winning T3 handheld system controller. Wrapped in a new contemporary design, the T3-V adds a host of new features that take it to a new level. Experience the eye-popping color of the 3.5" VGA touchscreen - the highest resolution display available. This allows for graphic detail so fine, it seems life-like. The addition of wireless Ethernet and a built-in web browser allows the user to access web pages, IP addressable devices and utilize IP control for web based integration applications. Like never before, the T3-V places powerful, stylish control in the palm of your hand.

## Description

The T3-V is a powerhouse of control wrapped in a stylish, ergonomic design. It builds on the original award winning concept with improved aesthetics, button layout, graphics, and communication options.

The T3-V is designed to satisfy the most discriminating user with custom graphics that come to life in sizzling color and clarity. The addition of a full VGA resolution, high contrast LCD display allows the T3-V to showcase graphics, photos, and web pages with detail that was simply not possible before. Also enhanced, the new assortment of hard buttons provides tactile feel and control of commonly used functions, including a three-way rocker switch for scrolling list navigation.

Other new features include the addition of 802.11g wireless Ethernet and a built-in web browser allowing the user to access web pages, and utilize IP control for integration applications. A larger capacity battery is supplied with the T3-V to provide extended battery life and uninterrupted use over longer periods.

The T3-V is more than just a universal remote control - it's an expandable control system. When used with the available RTI accessory devices, the T2-C is capable of RF transmission through walls and cabinets, power sensing for reliable operation, and two-way RS-232 communications\* for advanced control.

Call 952-253-3100

[www.rticorp.com](http://www.rticorp.com)



It's Under Control®

## Specifications

Power.....	3.6 VDC, 1700 mAh Lithium-Ion Battery Pack
Power Management.....	Automatic On/Off (tilt switch)
Infrared Control Range.....	30 feet (9.1 meters) @ 60 degrees
Infrared Frequency Transmission Range.....	15kHz - 460kHz
Radio Frequency Control Range.....	Up to 100 feet (30.5 meters)
.....	(with optional System Interfaces/Processors)
Radio Frequency Carrier.....	433 MHz
Wireless Ethernet.....	802.11g @ 2.4Ghz
Operating Temperature.....	+32°F to +122°F (0°C to +50°C)
Operating Humidity.....	5% to 95% Non-condensing
Touchscreen Display.....	High-brightness color TFT LCD
.....	Full VGA (480x640 pixels) with 65K colors
.....	Integrated high-resolution touchscreen
Display Size.....	3.5 in (89mm) diagonal
Backlights.....	White LED (Display), Blue/Red/White LED (Keypad)
Nominal Run Time on Full Charge.....	3.5 hours minimum, continuous use
.....	(5 to 7 days on average use)
Standby Time on Full Charge.....	30 Days
Battery Charge Time.....	3-4 Hours
Total System Memory.....	32M Bytes Flash (non-volatile) memory
Device Capability.....	Total number of devices is limited only by memory
Macro Capability.....	Unlimited steps in a single macro
.....	Total number of macros is limited only by memory
.....	Macro capability on every button
Communications.....	USB programming port
Dimensions (L x W x D).....	7.6 in (193mm) x 3.1 in (79mm) x 1.1 in (28mm)
Enclosure.....	High-impact molded ABS plastic
Weight.....	7.4 oz. (210g) with battery pack
Warranty.....	One Year (Parts & Labor) / 90 days on the battery

All specifications subject to change without notice

\* - Two-way feedback available only on the 2.4 GHz T3-V (utilizing Zigbee® technology) when used with RTI accessory devices.



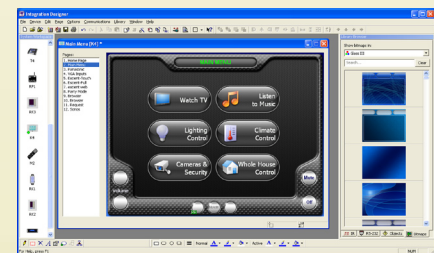
## Accessories

<b>RP-1</b>	<b>Remote Control Processor</b>
<b>ZRP-5</b>	<b>Remote Control Processor</b>
<b>ZRP-6</b>	<b>Remote Control Processor</b>
<b>MRP-64</b>	<b>Multi-Room Control Processor</b>
<b>XP-8</b>	<b>Advanced Control Processor</b>
<b>RM-433</b>	<b>RF Receiver</b>
<b>ZM-24</b>	<b>2.4GHz Transceiver Module</b>
<b>RCM-12</b>	<b>Relay Control Module</b>
<b>ECB-5</b>	<b>IR Emitter Connecting Block</b>



## Other RTI Products

<b>T1-B</b>	<b>Universal System Controller</b>
<b>M2</b>	<b>Universal System Controller</b>
<b>T2-B</b>	<b>Universal System Controller</b>
<b>T2-Cs</b>	<b>Universal System Controller</b>
<b>T2-C</b>	<b>Universal System Controller</b>
<b>T4</b>	<b>Universal System Controller</b>
<b>U1</b>	<b>Weather Resistant Controller</b>
<b>U2</b>	<b>Weather Resistant Controller</b>
<b>RKM-1</b>	<b>In-Wall Multi-Room Audio Keypad</b>
<b>RK1</b>	<b>In-Wall Keypad Controller</b>
<b>RK2</b>	<b>In-Wall Touchscreen Controller</b>
<b>RK3</b>	<b>In-Wall Touchscreen Controller</b>
<b>K4</b>	<b>In-Wall Touchscreen Controller</b>
<b>IR-PRO</b>	<b>Infrared Capture System</b>



Integration Designer® Programming Software

5775 12th Avenue East, Suite 180, Shakopee, MN 55379  
PH: (952) 253-3100 • Website: [www.rticorp.com](http://www.rticorp.com)

**RTI**  
It's Under Control®